



North Water Street Beach Shoreline Resiliency Project

Stakeholder Meeting #1

Adam Finkle
Woods Hole Group
Coastal Scientist, PWS, CERP
afinkle@woodsholegroup.com



WAREHAM
Massachusetts



Meeting Agenda

- 1) **Introductions** – Wareham Land Trust, Town, Woods Hole Group
- 2) **Review Scope of Work**
- 3) **Status of Concurrent Stormwater Improvement Project**
 - Town
- 4) **Key Considerations / Concerns**
 - Town, WLT, Neighbors
- 5) **Future Vision for Site**
 - Town, WLT, Neighbors
- 6) **Next Steps**
- 7) **Adjourn**

Meeting Goals: Review the Wareham Land Trust CZM Resiliency Grant Project goals, objectives, and scope of work, leverage WLT, Town local knowledge of the site, and begin discussing a vision for the future



Photos 1, 2 – Deterioration of seawall and low-lying nature of adjacent municipal assets.



*Funding provided by Massachusetts Office of Coastal Zone Management with in-kind match funding provided by Wareham Land Trust & town of Wareham



Review Scope of Work – Study Area

- Task 1 - Document Existing Conditions
- Task 2 - Vulnerability Assessment
- Task 3 - Alternatives Analysis & Reporting
- Task 4 - Public Education & Outreach

Acknowledging diversity of interests:

- Wareham Land Trust
- Town of Wareham
- Neighborhood Residents
- Public

Collaborative thinking regarding:

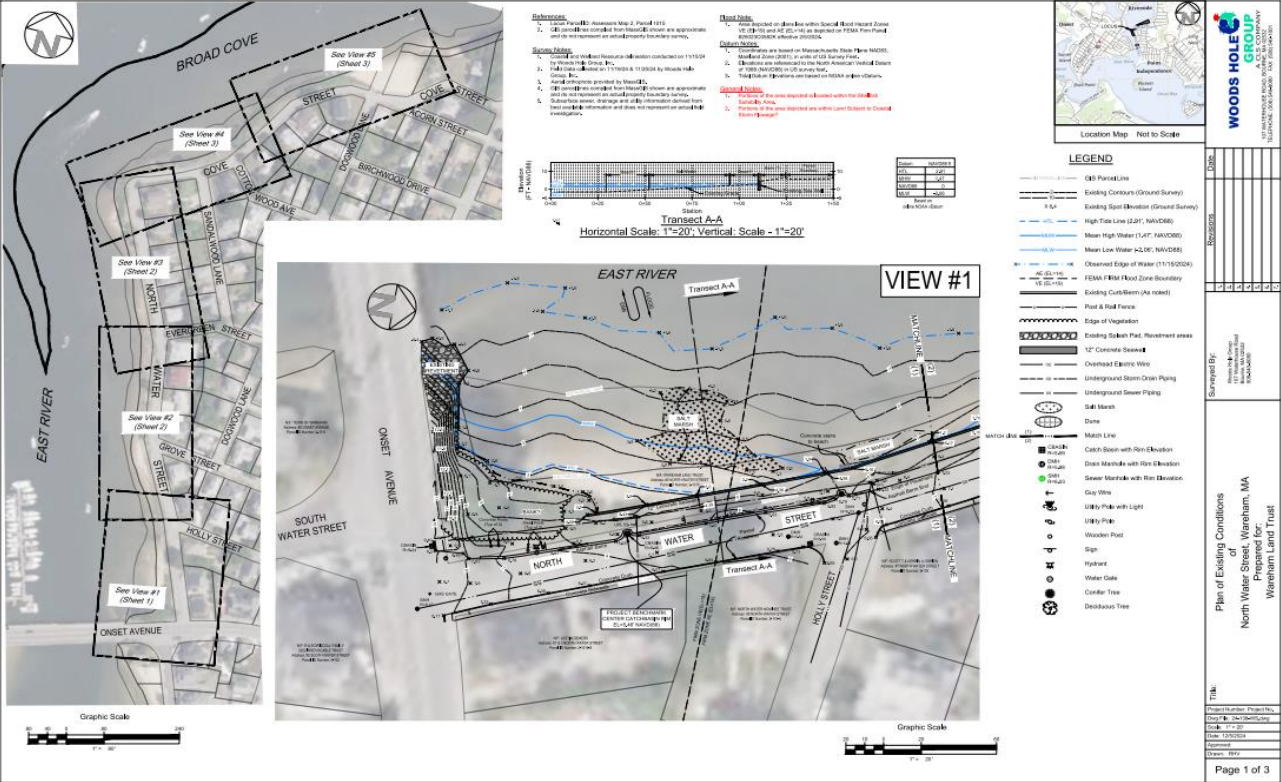
- Current Use, Condition, Concerns
- Future Use, Vision



Figure 1. Locus map of North Water Street Beach, Wareham, MA project site.

Task 1 – Evaluate Existing Conditions

- Task 1 – Document Existing Conditions
 - Engineering Assessment - Complete
 - Resource Area Delineation - Complete
 - Site Survey, Draft Existing Conditions Plans - Complete



Distribution of Delineation & Roadway Point Data

Task 2 – Vulnerability Assessment

- Task 2 – **Vulnerability Assessment**

- Review Existing Documentation - Ongoing
- Review MC-FRM, Flood Risk, Climate Datasets - Complete
- Summary Memo - Complete

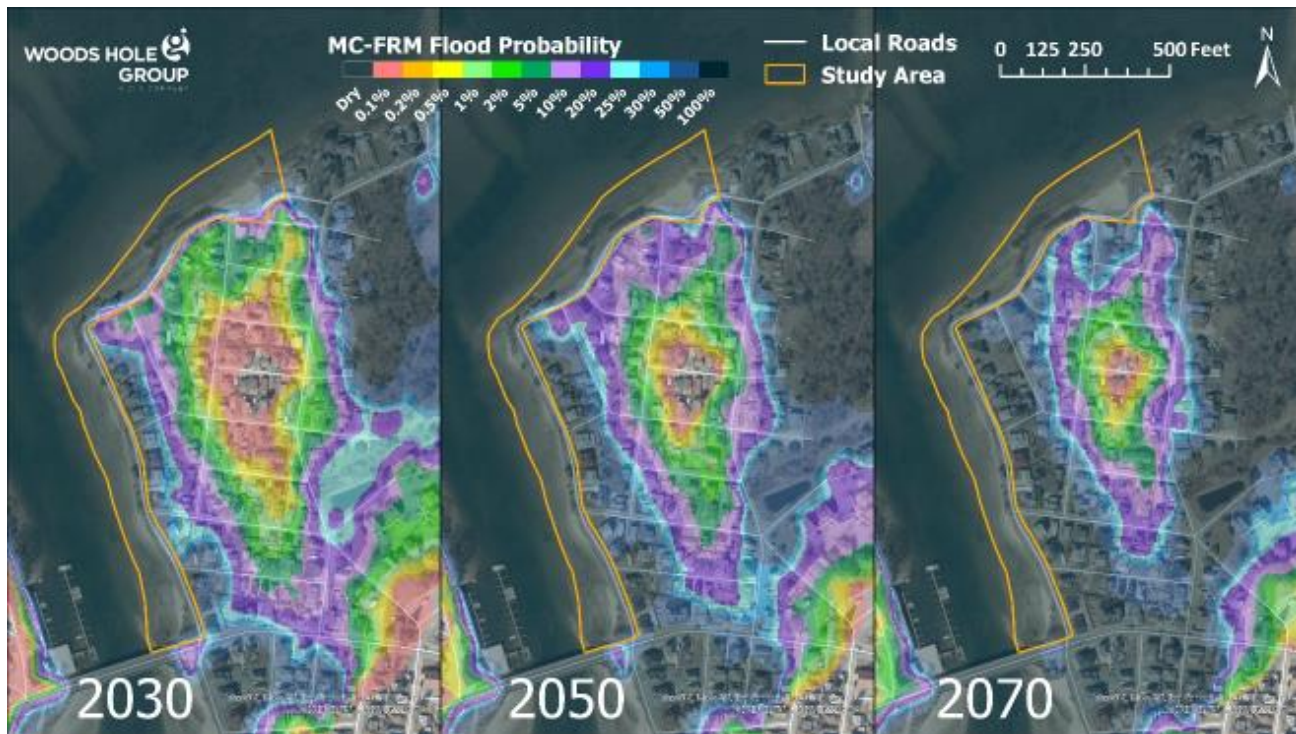


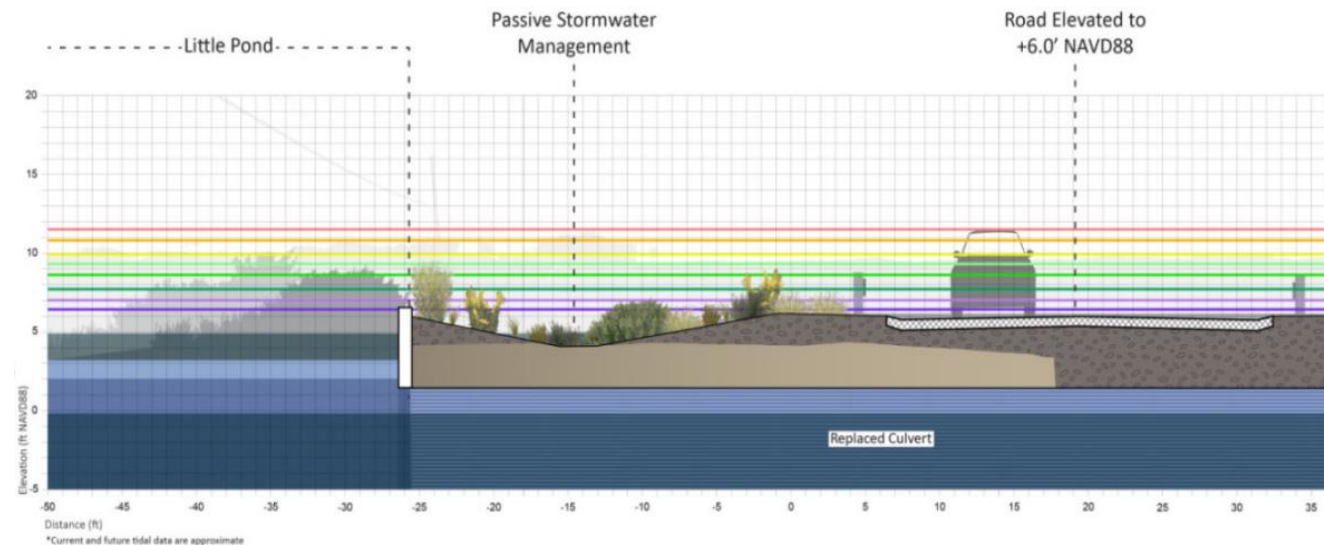
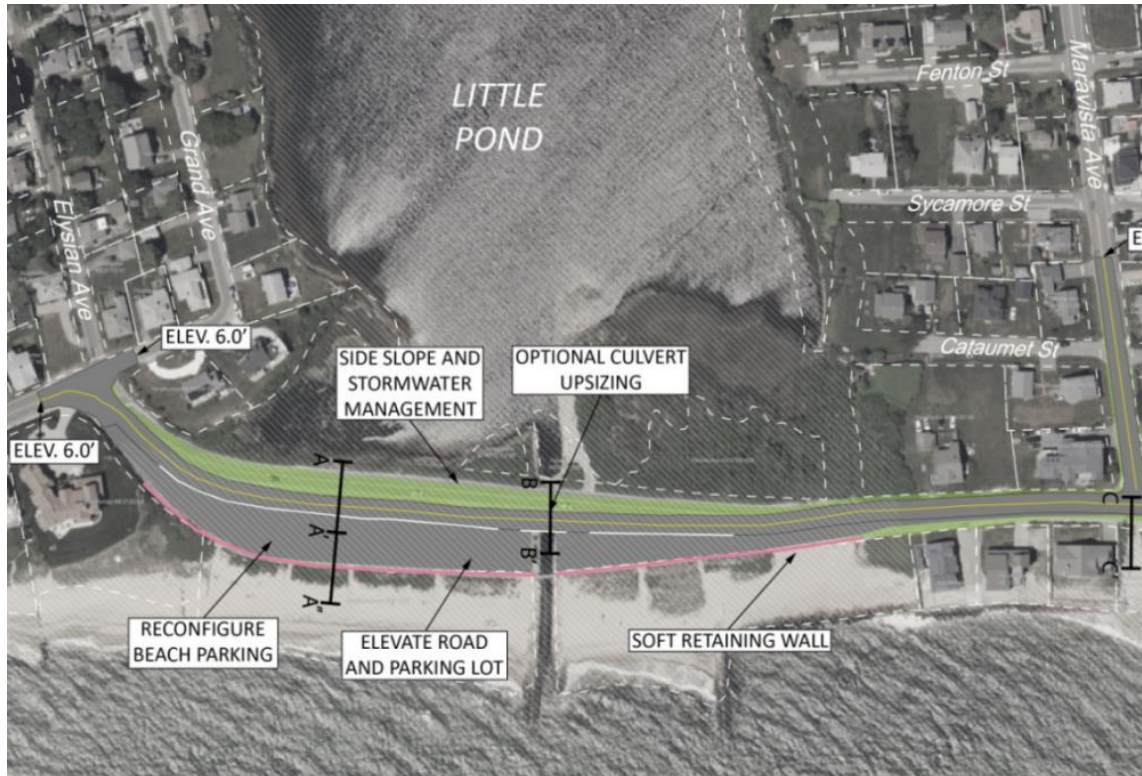
Figure 2. Increasing probability of inundation in 2030, 2050, and 2070 out-years.

- *Assessment will evaluate site-specific vulnerabilities of WLT and Town of Wareham assets & infrastructure.*
- *Evolution of flood pathways will also be considered.*
- *Coastal flood probabilities considered relative to high-emissions sea-level-rise scenarios, representing a conservative planning approach.*

Task 3 – Alternatives Analysis

Next Step In Process

- Task 3 – Alternatives Analysis & Reporting
 - Develop & Evaluate Alternatives
 - Decision Support & Costing
 - Final Report



- Experience on other roadway and infrastructure resilience projects
- Focus on improving resilience & habitat, public safety, and access to the shore.
- Consider full suite of alternatives for upland and coastal protection - customizable approach.
- Work towards a preferred alternative that embodies shared vision for the site.

Task 4 – Public Education & Meetings

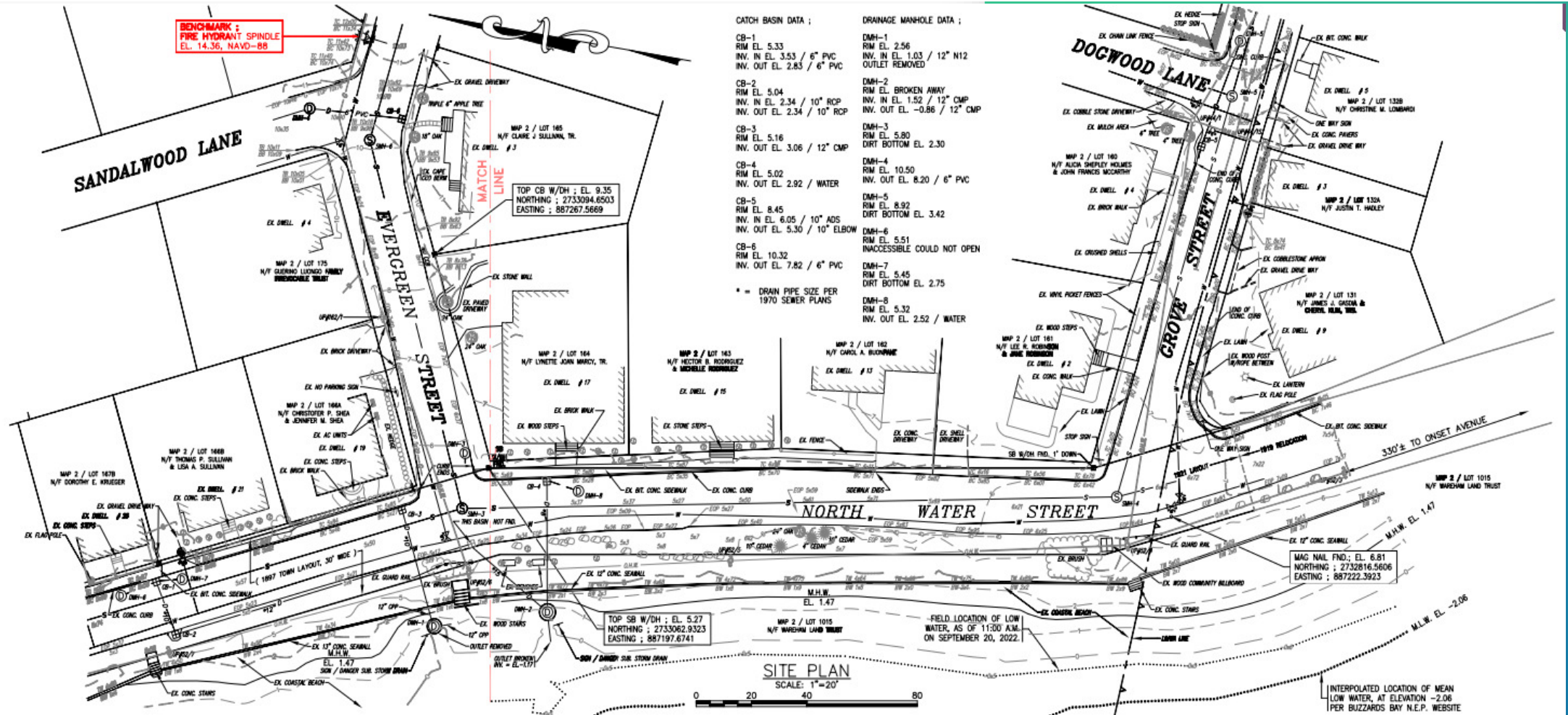
- Tasks 4, 5 – **Public Education & Meetings**
 - Public Stakeholder Meetings (2x)
 - Monthly Updates to CZM

- Stakeholder Meeting 1:
 - Project Overview
- Stakeholder Meeting 2:
 - Review Suite of Alternatives
 - May - June 2025



Figure 4. Proximity of project site to environmental justice community.

Status of Concurrent Stormwater Project



WLT, Town, Neighbors, Public - Key Considerations and/or Concerns?

- What is the most important element for the project team to consider?

May include but not be limited to:

- Aging Infrastructure
- Low Lying Roads
- Vulnerable Utilities & Assets
- Public Access & Public Safety
- Recreation
- Degraded Habitat
- Coastal Erosion
- Coastal Inundation
- Emergency Access



Vision for Site – Long-Term Goals & Objectives

- Favorite Aspect of the Site?
- Favorite Activity, Use?
- Future Vision or Legacy for the Site?



Questions?

Adam Finkle
Woods Hole Group
Coastal Scientist, PWS, CERP
afinkle@woodsholegroup.com